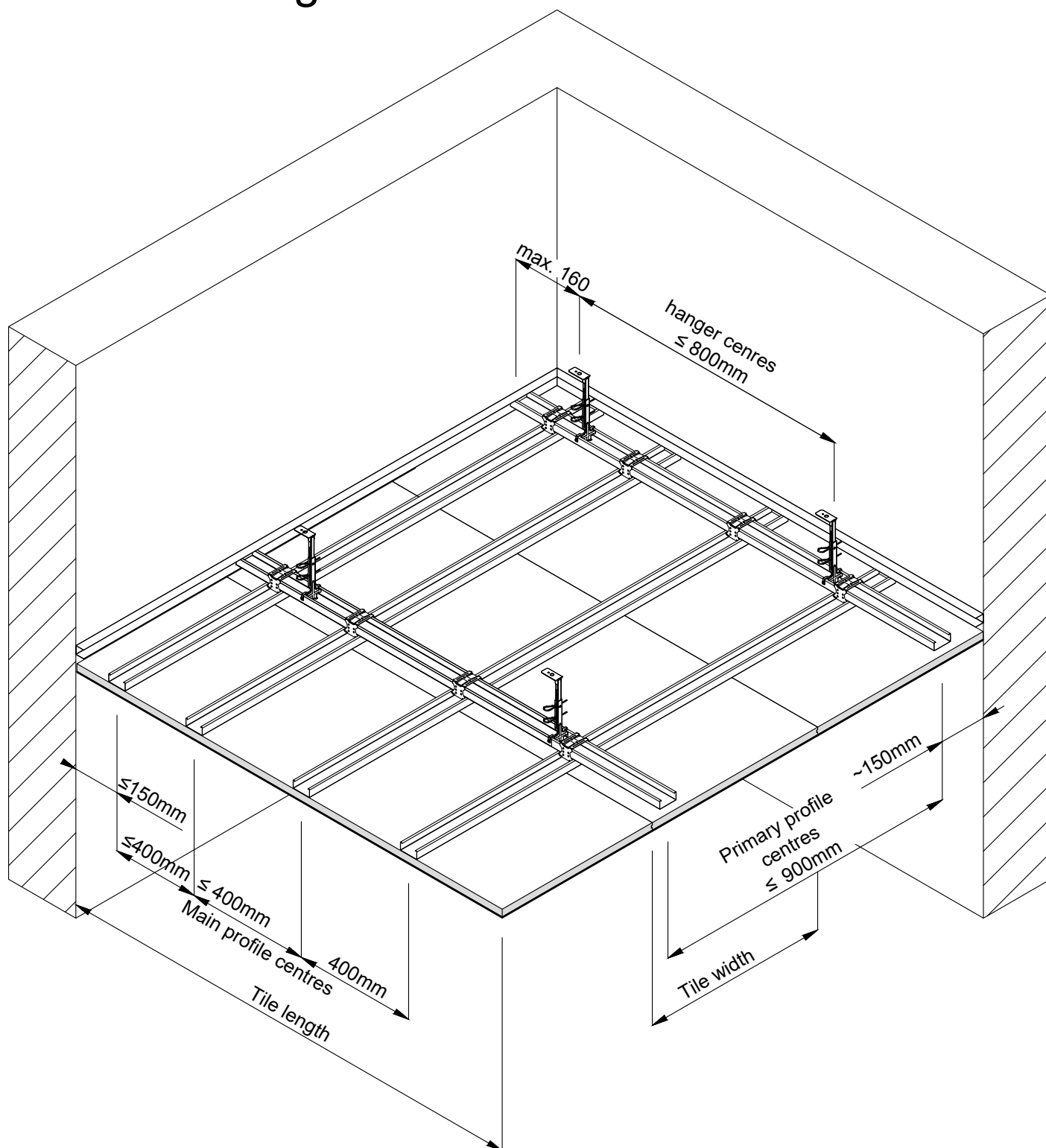
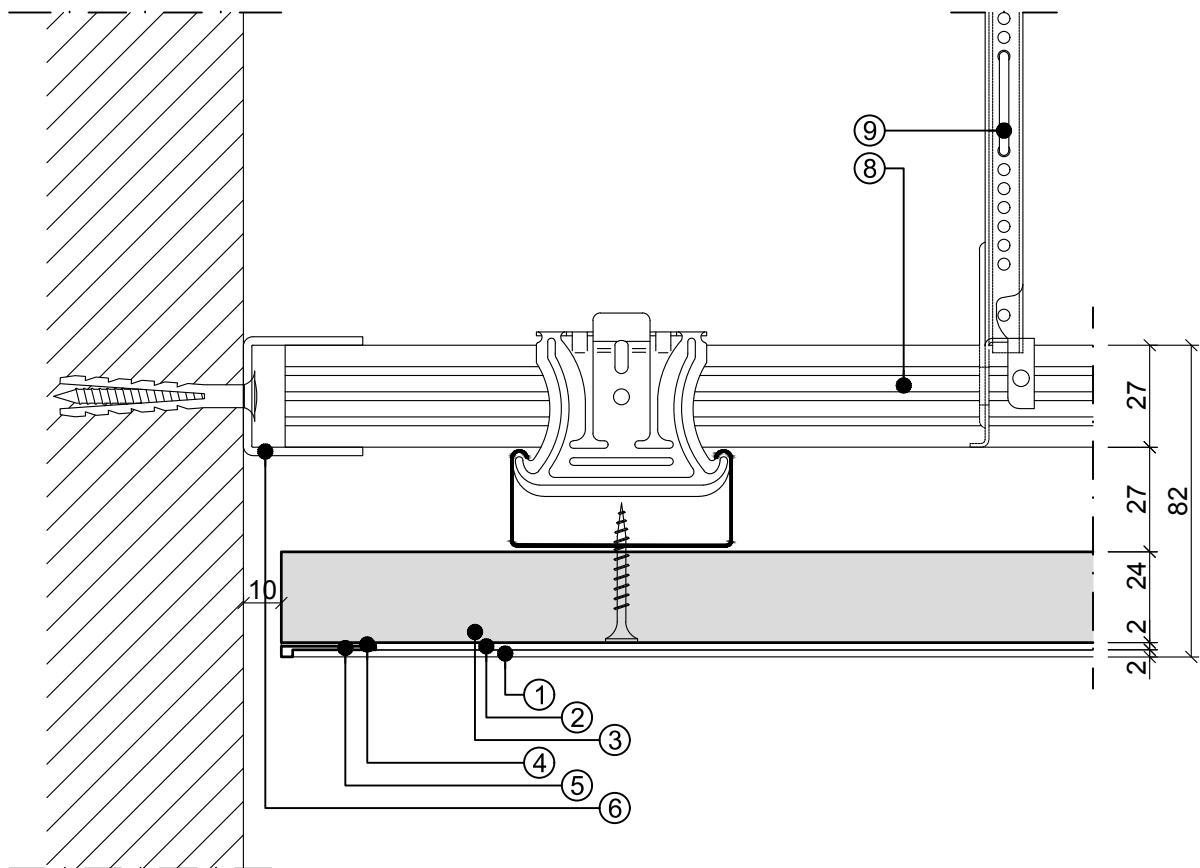


S.A.C. Silent - Grey-Line
Detail drawings



- **Nonius hanger:** centres $\leq 800\text{mm}$
- **Primary profile:** centres $\leq 900\text{mm}$
- **Main profile:** centres = 400mm

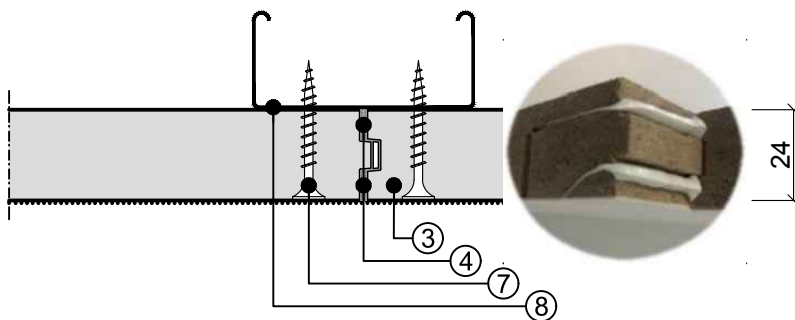
Grey-Line system - Structure with subconstruction CD 60x27



Note:

An open shadow gap of at least 10mm is obligatory. It is possible to use a UD perimeter profile at the level of the primary profile.

Grey-Line execution panel joint



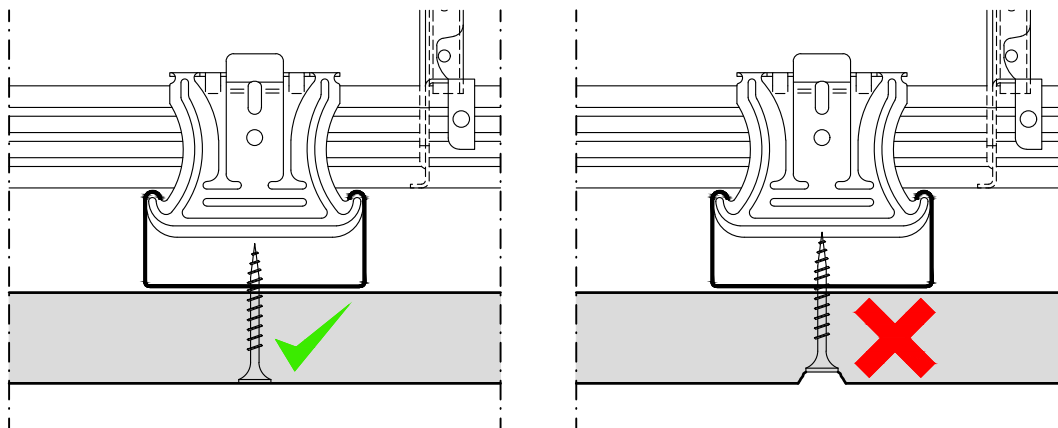
Note:

The front faces of the panels must be dust-free before bonding. After lightly drying the adhesive, remove excess material from the surface. (not elapsing).

Key

1. S.A.C. Topcoat acoustic plaster
2. S.A.C. Basic acoustic plaster
3. AMF Base Board
4. Knauf POWER-ELAST
5. PVC end profile 3mm
6. UD perimeter profile 27/28/27
7. Aquapanel Maxi screws SN39
8. Primary and main profiles CD 60/27
9. Nonius hanger

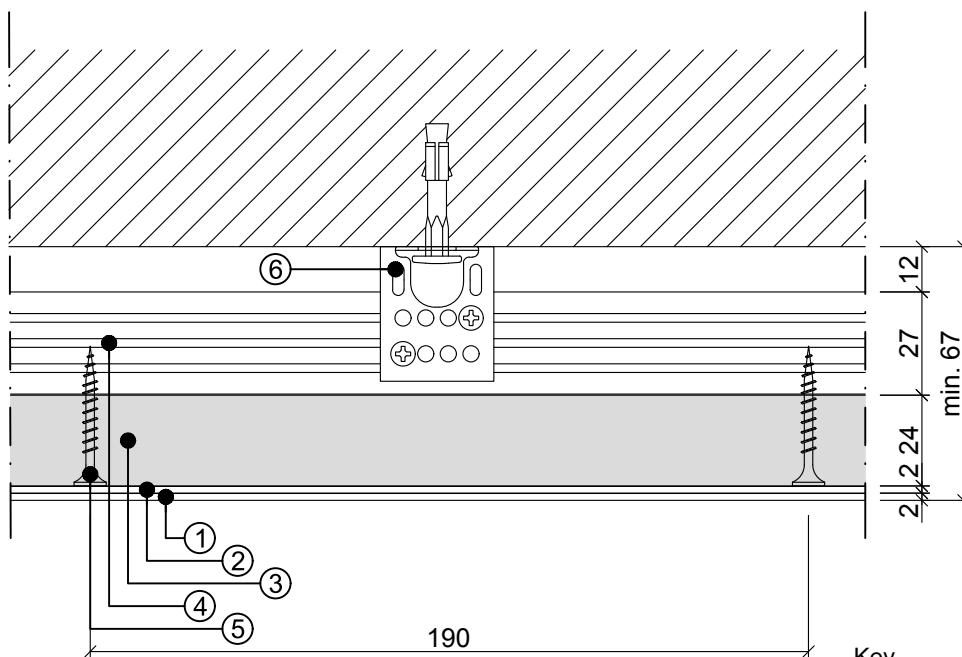
Grey-Line system - Panel screwing



Note:

Press the panels tightly against the profiles during screwing.
Process screws flush with the panel. Screws that are too low must be filled with basic plaster.

Grey-Line minimum construction height



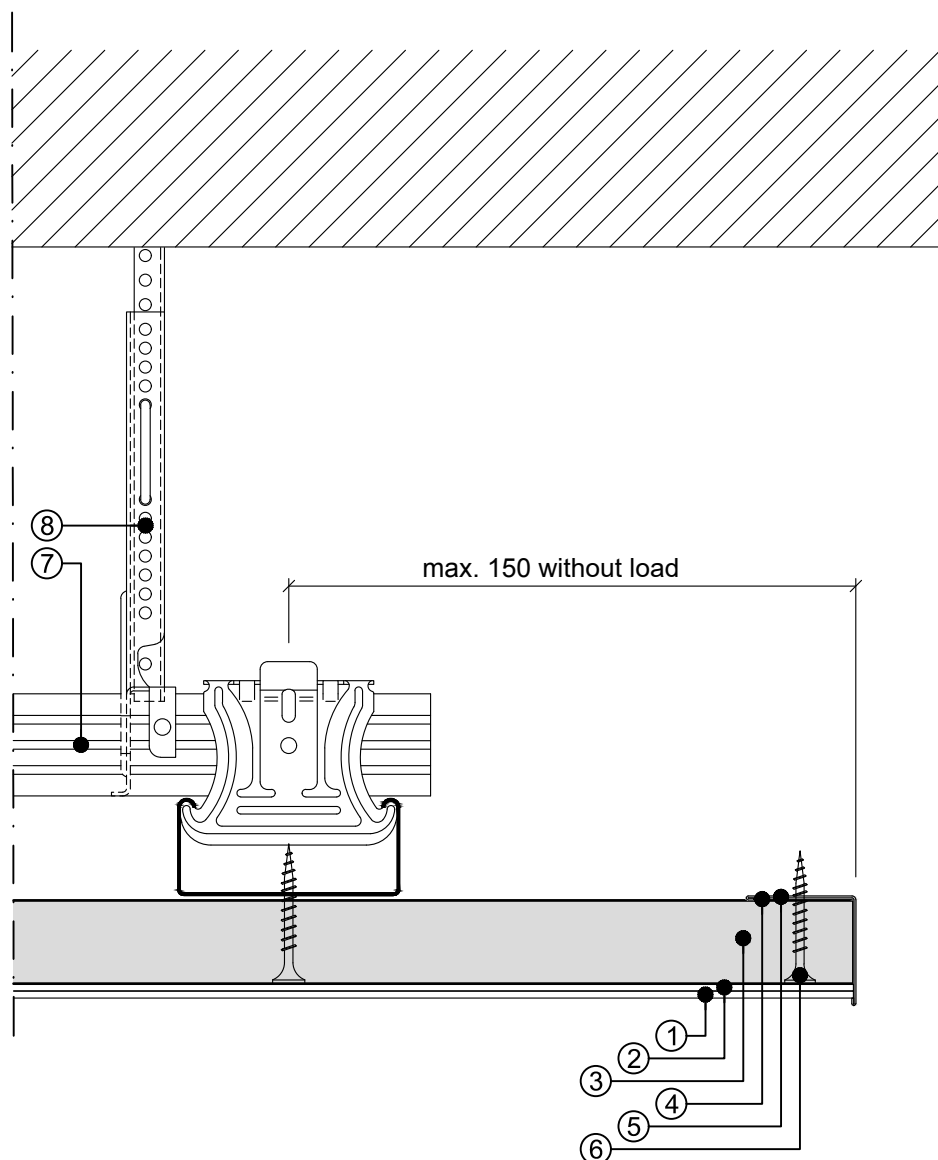
Note:

For even surfaces, it is possible to work with CD ceiling profile, height 15mm.
Maximum deformation of the construction ceiling L/500 or for wooden ceilings L/350.

Key

1. S.A.C. Topcoat acoustic plaster
2. S.A.C. Basic acoustic plaster
3. AMF Base Board
4. CD-Profil 60/27
5. Aquapanel Maxi screws SN39
6. Direct connector

Grey-Line system - Version with exposed edges



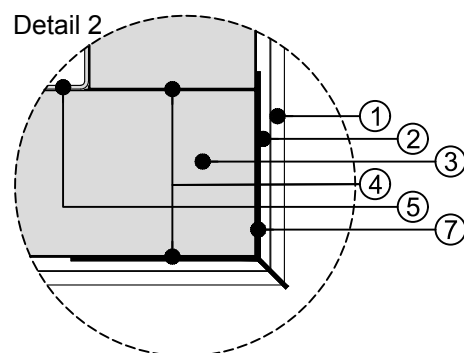
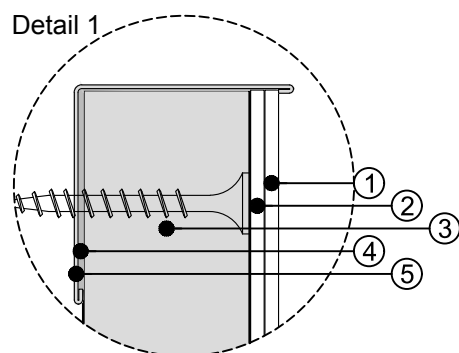
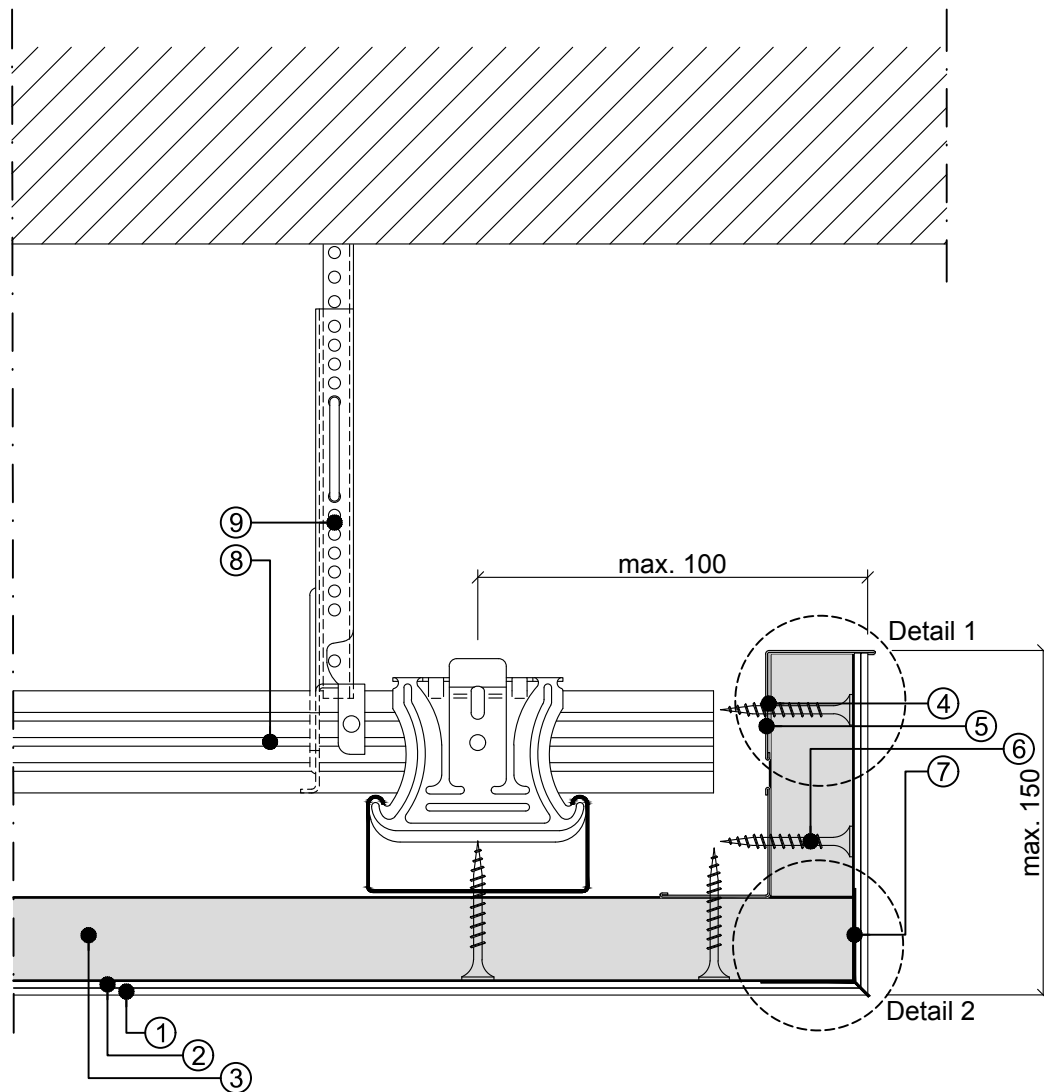
Note:

The aluminium angle ⑤ is fixed to the Base Boards with Knauf POWER-ELAST ④ and additionally screwed. ⑥

Key

1. S.A.C. Topcoat acoustic plaster
2. S.A.C. Basic acoustic plaster
3. AMF Base Board
4. Knauf POWER-ELAST
5. Aluminium end angle
6. Aquapanel Maxi screws SB39 with drill bit
7. Primary and main profiles CD60/27
8. Nonius hanger

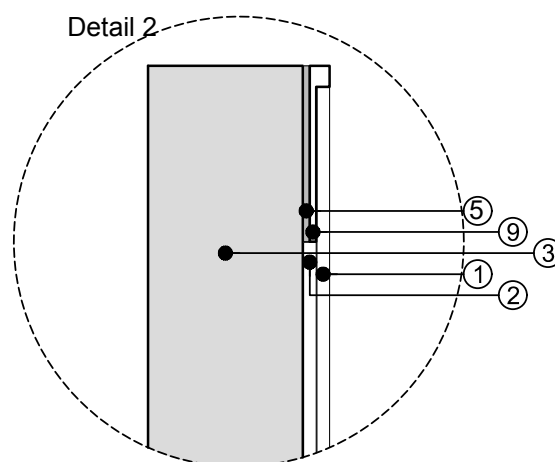
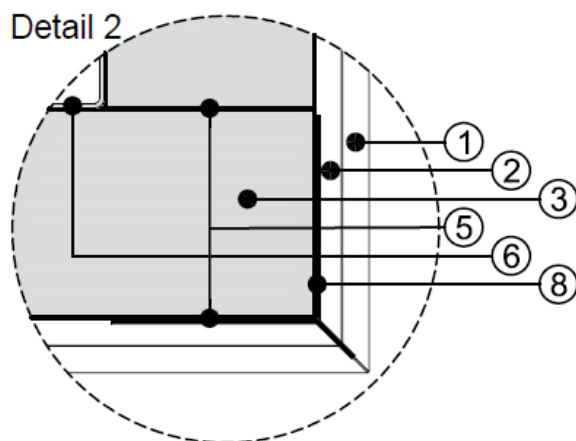
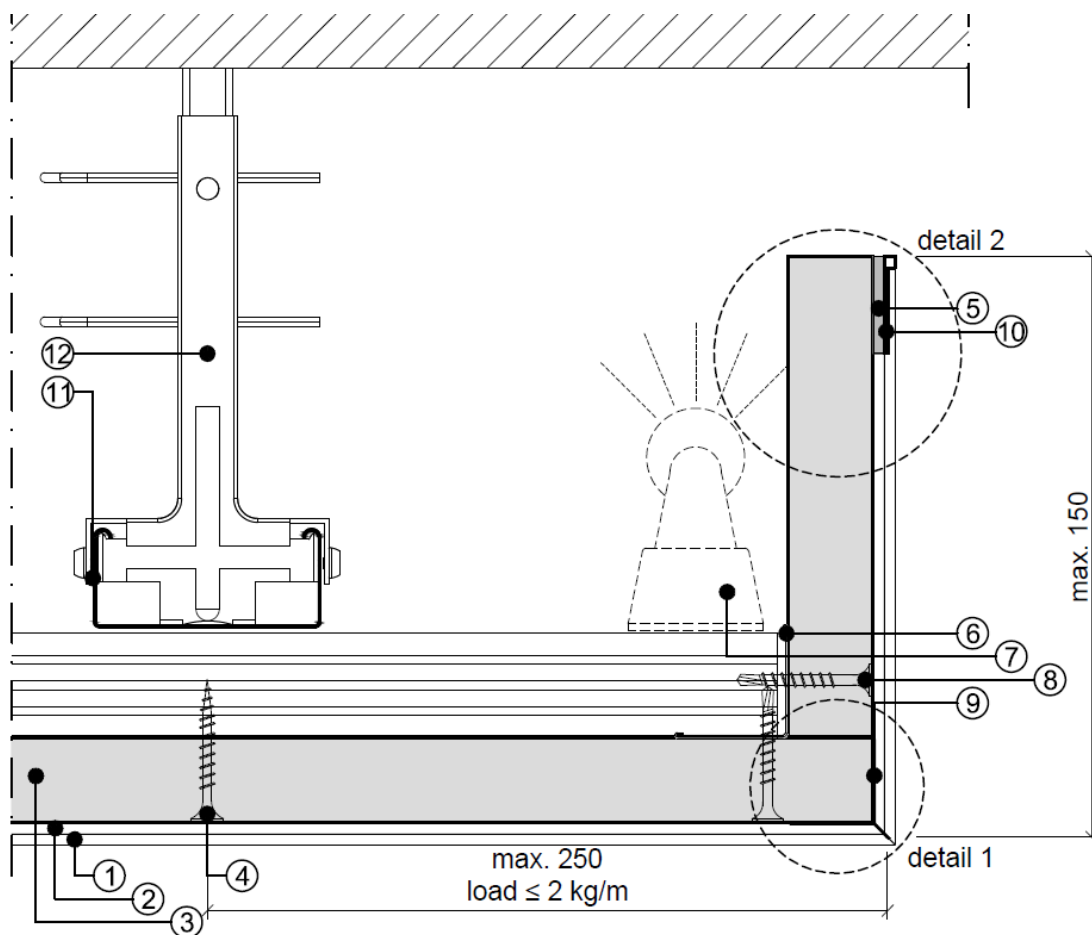
Grey-Line system - With an angle



Key

1. S.A.C. Topcoat acoustic plaster
2. S.A.C. Basic acoustic plaster
3. AMF Base Board
4. Knauf POWER-ELAST
5. Aluminium end ange
6. Aquapanel Maxi screws SN39
7. PVC corner profile
8. Primary and main profiles CD60/27
9. Nonius hanger

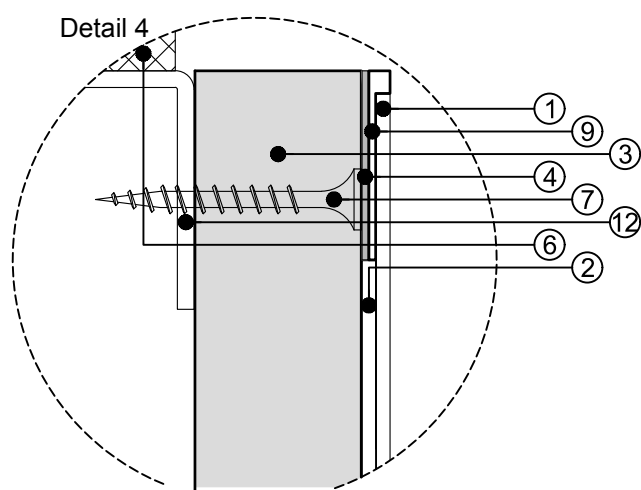
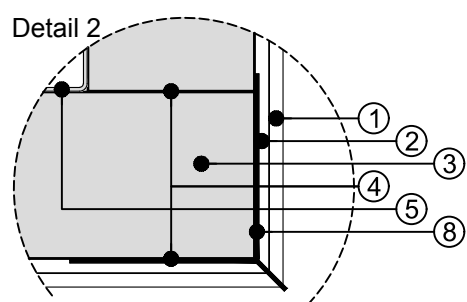
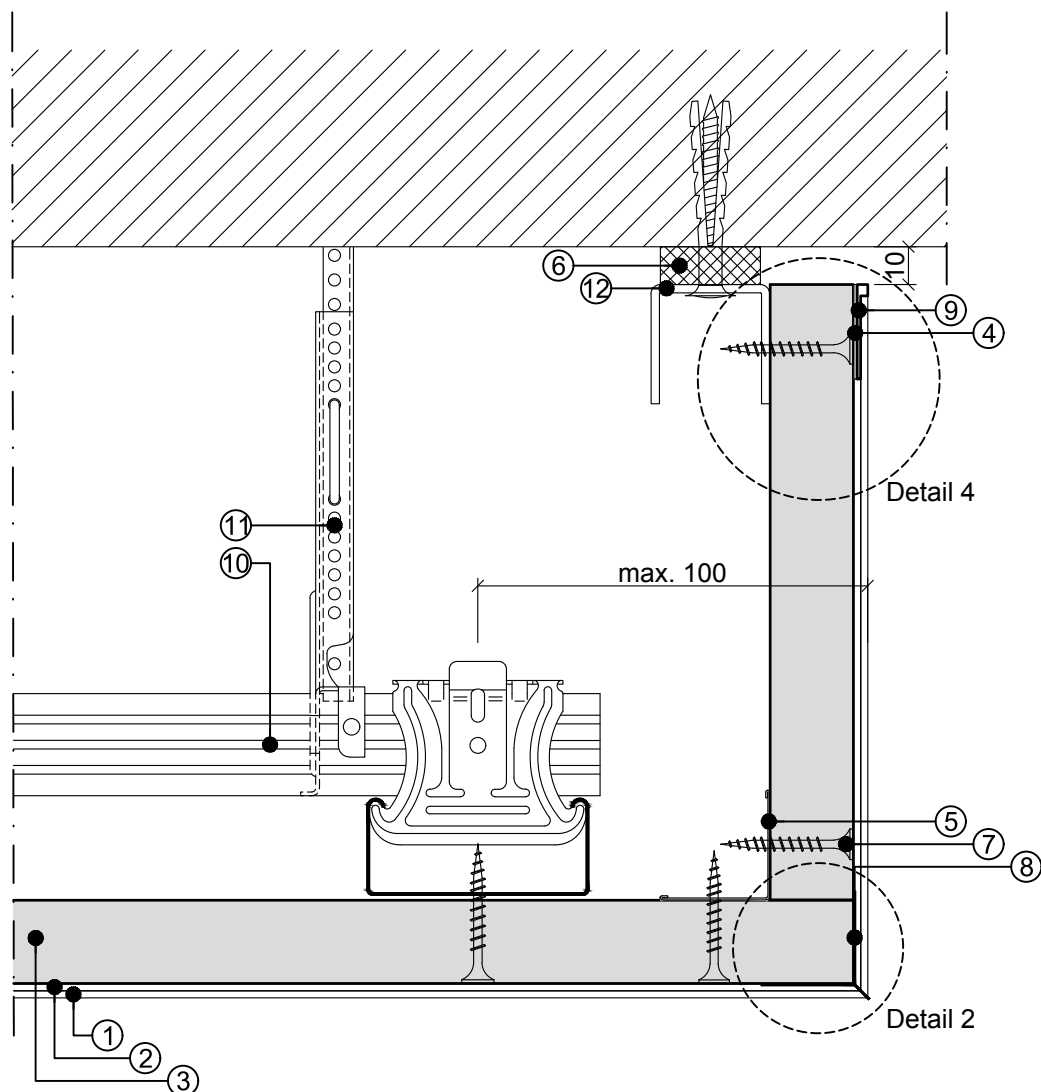
Grey-Line system - Lighting coves



Key

1. S.A.C. Topcoat acoustic plaster
2. S.A.C. Basic acoustic plaster
3. AMF Base Board
4. Aquapanel Maxi screws SN39
5. Knauf POWER-ELAST
6. Aluminium end angle
7. Spacer bar for fixing point
8. Aquapanel Maxi screws SB39 with drill bit
9. PVC corner protection angle 3mm
10. PVC end profile 3mm
11. Primary and main profiles CD60/27
12. Nonius hanger

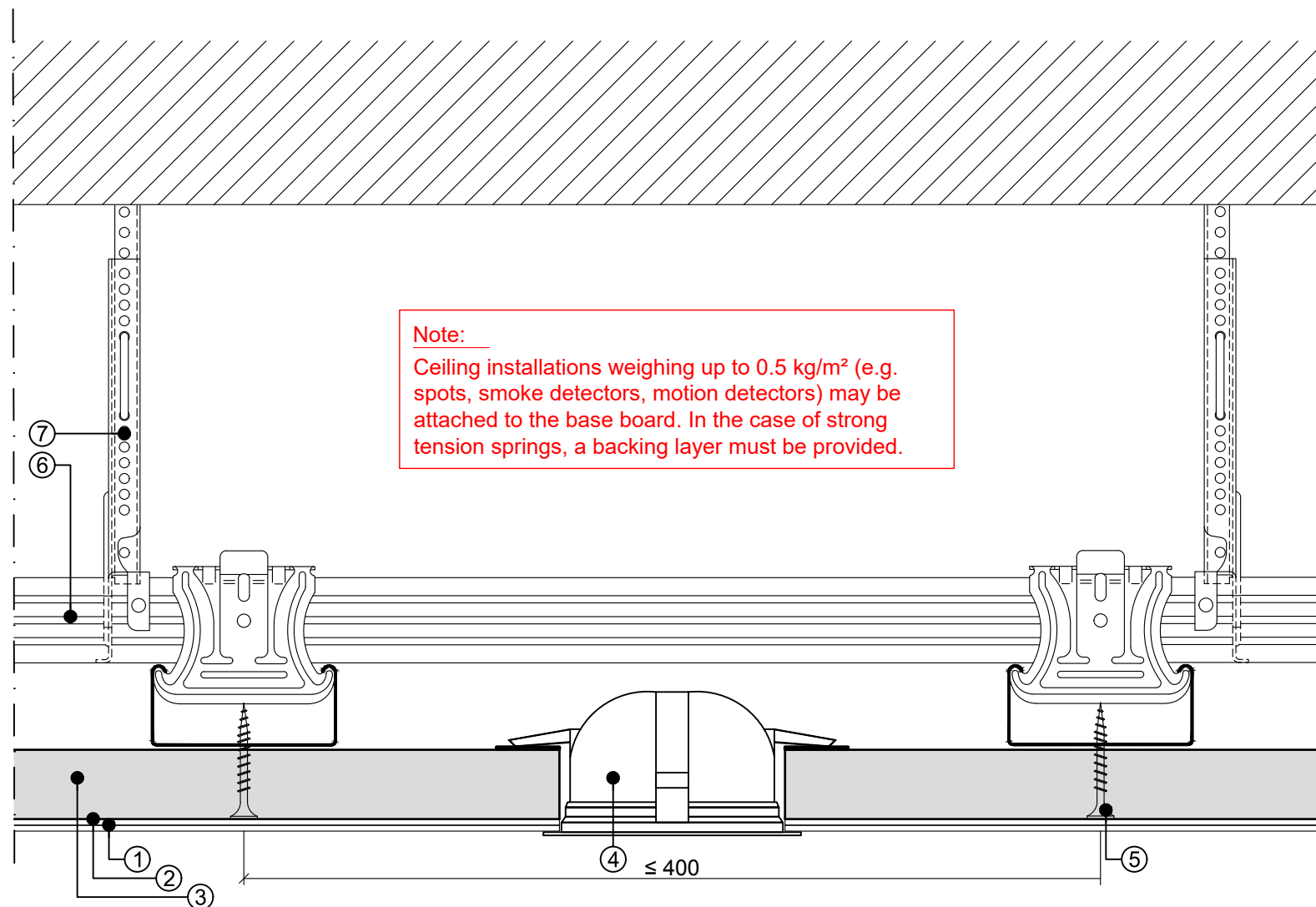
Grey-Line system



Key

1. S.A.C. Topcoat acoustic plaster
2. S.A.C. Basic acoustic plaster
3. AMF Base Board
4. Knauf POWER-ELAST
5. Aluminium end angle
6. Spacer bar for fixing point
7. Aquapanel Maxi screws SB39
8. PVC corner protection angle 3mm
9. PVC end profile 3mm
10. Primary and main profiles CD60/27
11. Nonius hanger
12. UD perimeter profile 27/28/27

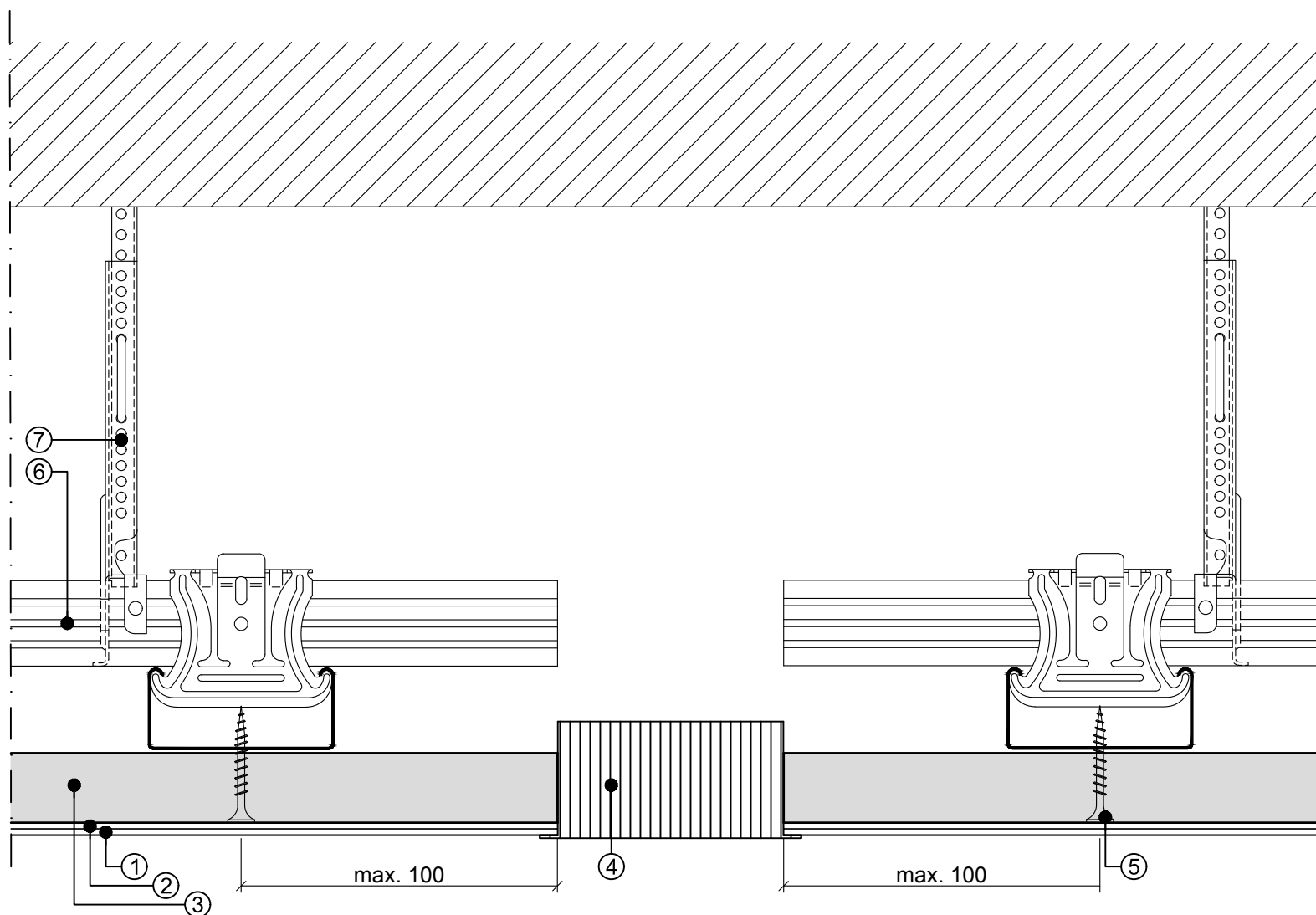
Grey-Line system - Ceiling installations (spots, smoke detectors, etc.)



Key

- | | |
|------------------------------------|---------------------------------------|
| 1. S.A.C. Topcoat acoustic plaster | 5. Aquapanel Maxi screw SN39 |
| 2. S.A.C. Basic acoustic plaster | 6. Primary and main profiles CD 60/27 |
| 3. AMF Base Board | 7. Nonius Hanger |
| 4. Ceiling installations | |

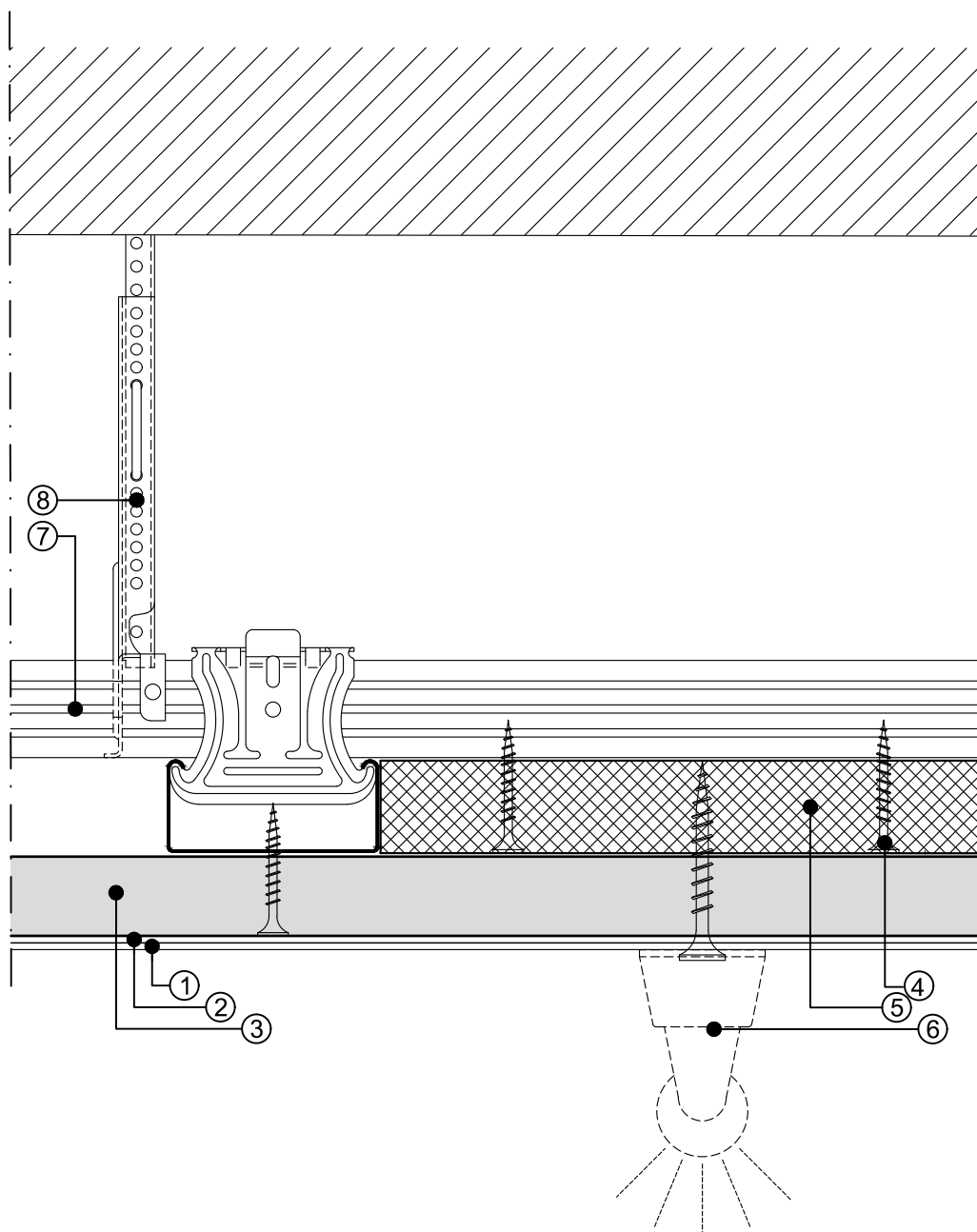
Grey-Line system - Ventilation outlet



Key

- | | |
|------------------------------------|---------------------------------------|
| 1. S.A.C. Topcoat acoustic plaster | 5. Aquapanel Maxi screw SN39 |
| 2. S.A.C. Basic acoustic plaster | 6. Primary and main profiles CD 60/27 |
| 3. AMF Base Board | 7. Nonius Hanger |
| 4. Ventilation outlet | |

Grey-Line system - Surface-mounted light



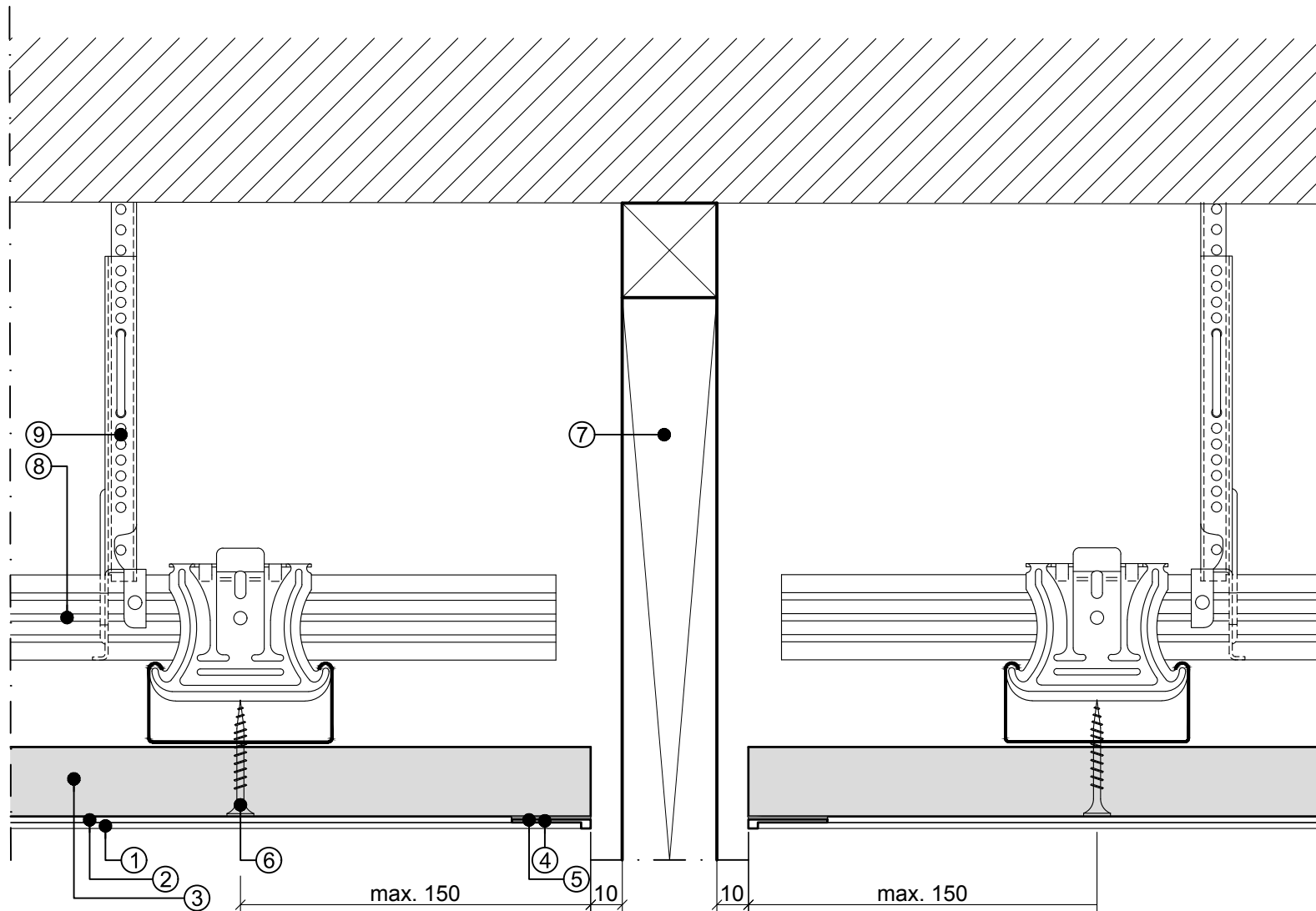
Note:

Additional loads with a max. weight of 5 kg/m² and max. 10 kg per suspension point are permissible.

Key

1. S.A.C. Topcoat acoustic plaster
2. S.A.C. Basic acoustic plaster
3. AMF Base Board
4. Aquapanel Maxi screw SN39
5. Wood backing (reinforcement)
6. Surface-mounted light
7. Primary and main profiles CD 60/27
8. Nonius hanger

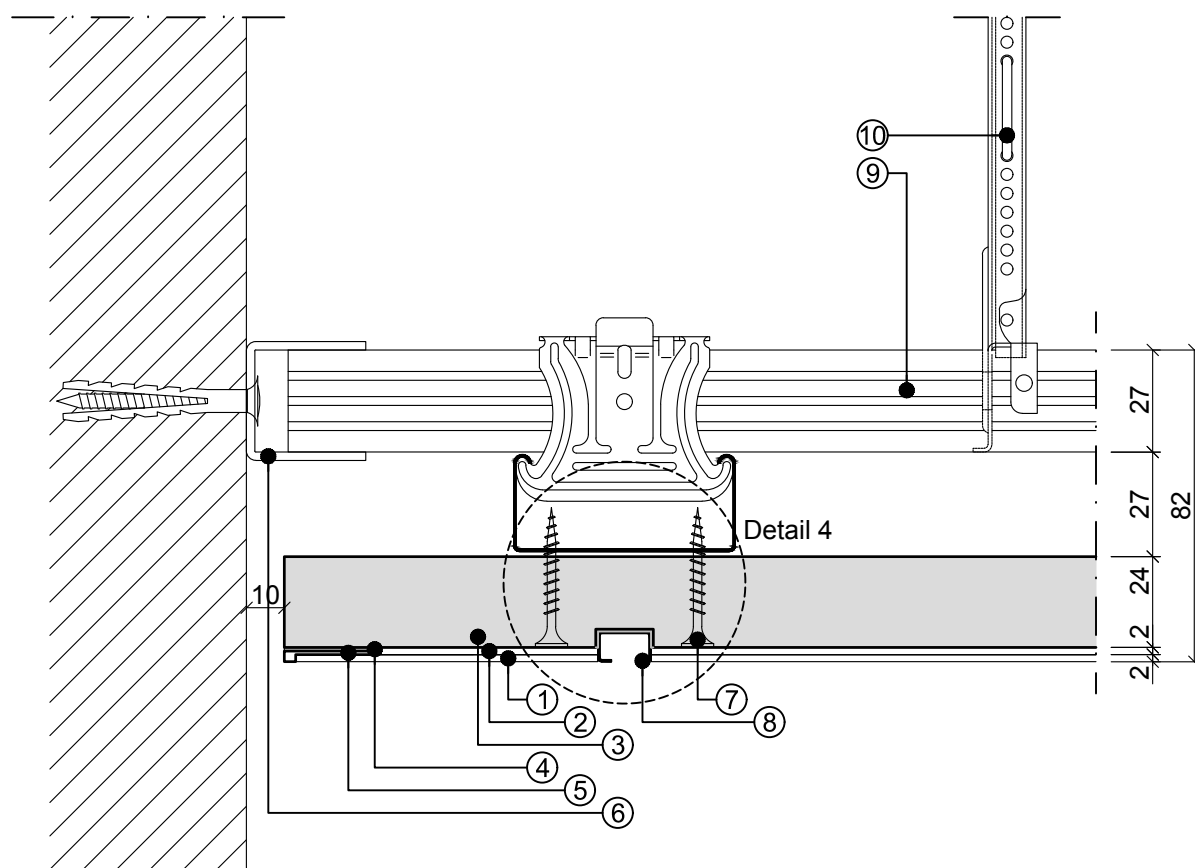
Grey-Line system - Connection to glass and folding partition wall



Key

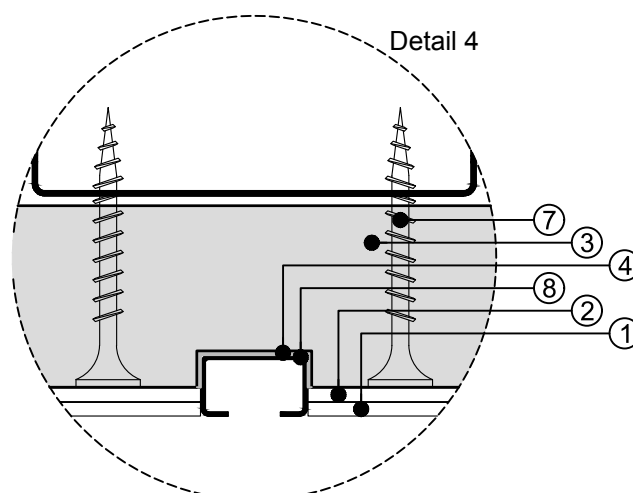
- | | | |
|------------------------------------|------------------------------|---------------------------------------|
| 1. S.A.C. Topcoat acoustic plaster | 4. Knauf Power-Elast | 7. Glass and folding partition wall |
| 2. S.A.C. Basic acoustic plaster | 5. End profile PVC, 3mm | 8. Primary and main profiles CD 60/27 |
| 3. AMF Base Board | 6. Aquapanel Maxi screw SN39 | 9. Nonius hanger |

Grey-Line system - Curtain rail



Note:

The curtain rail must be glued to the base board by Power-Elast. The cut-out in the support plate must be dust-free before gluing. A CD profile 60/27 must be provided behind the curtain rail.



Key

1. S.A.C. Topcoat acoustic plaster
2. S.A.C. Basic acoustic plaster
3. AMF Base Board
4. Knauf Power-Elast
5. End profile PVC, 3mm
6. UD perimeter profile 27/28/27
7. Aquapanel Maxi screw SN39
8. Curtain rail VS 57
9. Primary and main profiles CD 60/27
10. Nonius hanger

[illegible]

1. S.A.C. Topcoat acoustic plaster
2. S.A.C. Basic acoustic plaster
3. AMF Base Board
4. Knauf Power-Elast
5. Access panel F-TCT-2 300-600
6. Knauf Diamant board ,15mm
7. Primer
8. Aquapanel Maxi screw SN39
9. Primary and main profiles CD 60/27
10. Nonius hanger

- Size of the access panels
300x300mm, 400x400mm, 500x500mm und 600x600mm
Ceiling cut-out: Length + 30mm bzw. Width + 30mm
- A nonius hanger must be installed at every corner of the access panel
- The transition between the access panel and the ceiling must be airtight.